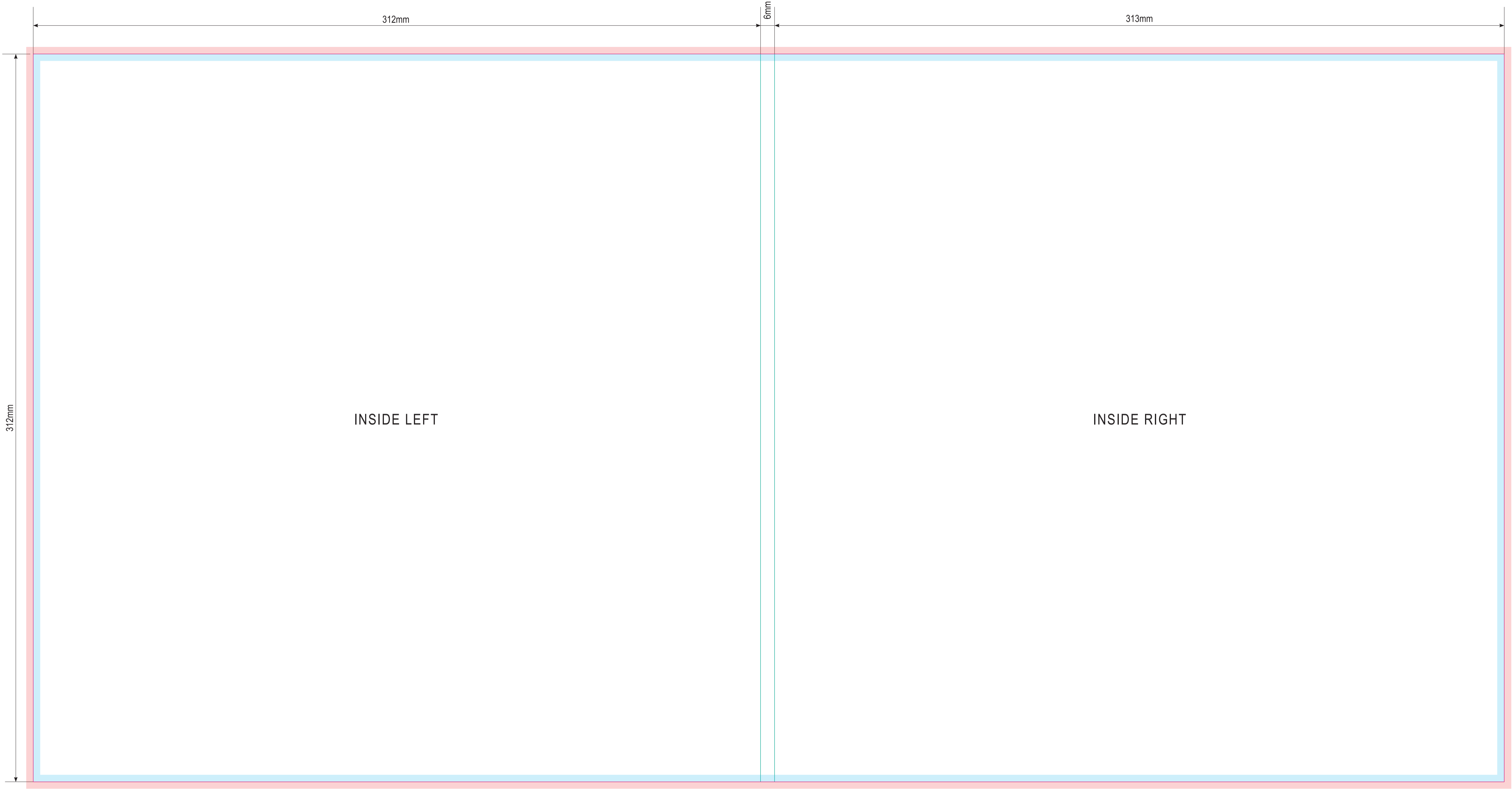


Bleed (3 mm) Tolerance field (3 mm)

Cutting line	—			
Folding line	—			
Perforation line	- - - -			
paper weight: 300-350 gsm	Scale	1/1	Drawing number	W20 M
	Date	16/11/2016	Method of Projection	INDD (CS) / PDF



www.gmrecords.pl



INSIDE LEFT

INSIDE RIGHT